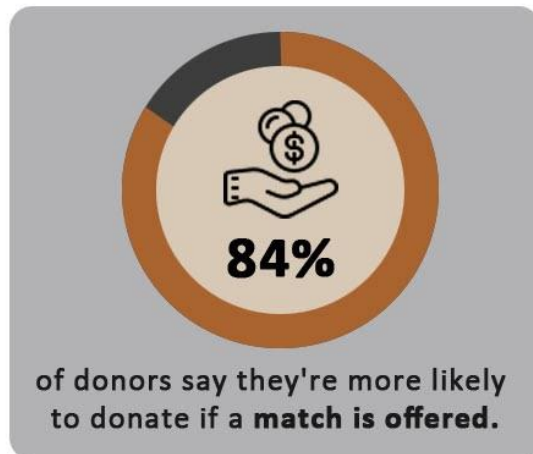
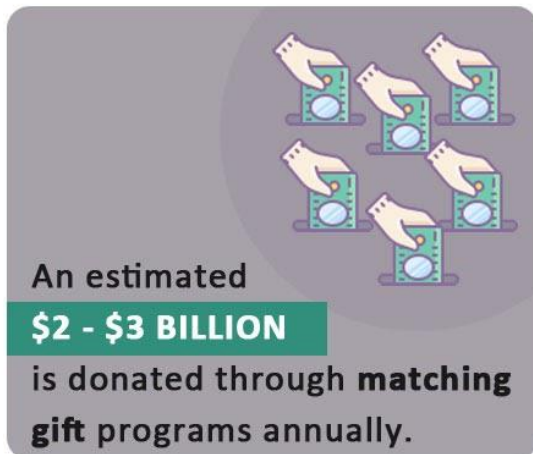


Matching Gifts Statistics

* Microsoft is the largest contributor of corporate philanthropy funds, with 65% employee participation rate for annual giving campaigns.

STATISTICS PROVIDED BY **DOUBLE THE DONATION**



HARRIS-STOWE
STATE UNIVERSITY

CIE
CENTER OF INNOVATION
& ENTREPRENEURSHIP

MECCA
MINORITY ENTREPRENEURSHIP
CENTER